



Rubber Technology

Rubber Consultants has the capability to develop formulations and processes for tyre retreading, injection moulding, extrusion, calendering and compression moulding and assessment of rubber flow using the equipment in a modern mill-room.

Extensive facilities include:

- A range of mixers and mills
- Extruders
- Twin barrel capillary rheometer
- Presses
- Calenders
- Injection moulding machine
- Autoclave

Separate areas are available for mixing black and coloured compounds and for processing thermoplastic elastomers (TPEs), including a plastic injection moulding machine, extruders capable of co-extrusion and mixing in a 24mm twin-screw extruder.

Rubber Consultants' technologists have expertise in a wide range of polymers including NR, NBR, IIR, SBR and EPDM.

Rubber Consultants can develop formulations to meet international standards or customers requirements and carry out small-scale specialised custom compounding.

For further information please contact:

Colin Robinson crobinson@rubberconsultants.com +44 (0)1992 554657 ext 2062

Prototype Design & Manufacturing

Rubber Consultants can produce parts if required from one offs, prototypes to small production runs all manufactured under the quality umbrella of ISO 9001:2000.

The facilities on offer to clients include:

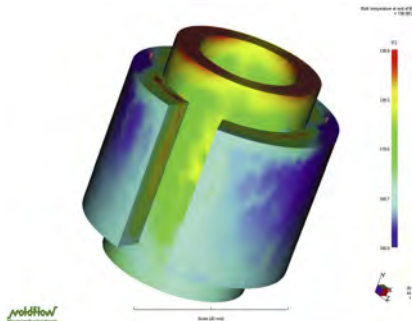
- Millroom mixing
- Rubber compound testing together with advice on compound selection, fabrication and tool design

Rubber Consultants has experience in working with the aerospace industry both in Europe and the USA.

For further information please contact:

Dr Marina Fernando mfernando@rubberconsultants.com +44 (0)1992 554657 ext 2083

Dr Alan Muhr amuhr@tarrc.co.uk +44 (0)1992 554657 ext 2082



Rubber
Consultants

TESTING ● INNOVATION ● SOLUTIONS
since 1984

Rubber Consultants, Brickendonbury, Hertford, SG13 8NL, UK

www.rubberconsultants.com e-mail: info@rubberconsultants.com

tel: +44 (0)1992 554657 fax: +44 (0)1992 504248